



# ROSES

by pheno geno

Collection 2025

We would especially like to thank all our employees as well as people that have helped us with their hard work and support: Aleksandra & Dušan, Aedske, Arjan, Bas, Biljana, Igor, Kosta, Kovač family, Lejla, Ljiljana, Miloš, Mirjana, Nemanja, Niels and all the others that provided help and inspiration.

All photographs by: Željko Škrbić, Srđan Čaha, Biljana Obradović, Mirjana Mirić, Sonja Lazukić, Paspартu Photography, Ana Banjac, Isidora Dronjak, Miloš Živković, Zoran, Reka, Aedske Bonnema, Theo Clevers and Eveline Wild.

Catalogue's design by: eMMY van Lamoen

© Copyright Pheno Geno Roses d.o.o. Collections 2025  
The contents of these Collections, including but not limited to logos, trademarks, trade names, text, images, graphics, and their arrangements are proprietary to Pheno Geno Roses d.o.o. as a daughter company or Pheno Geno Roses b.v. as a mother company and subject to intellectual property rights protection.

No contents of these Collections may be reproduced, copied, transferred, published, distributed, translated, or put on a website or on the internet, without prior written authorization. Pheno Geno Roses b.v. Witveldweg 33, 5971 NS Grubbenvorst, The Netherlands info@phenogeneroses.com www.phenogeneroses.com Pheno Geno Roses d.o.o Maršala Tita 75, 23326 Ostojićevo Serbia

Pheno Geno Roses b.v.  
Witveldweg 33,  
5971 NS Grubbenvorst,  
The Netherlands

Pheno Geno Roses d.o.o  
Maršala Tita 75,  
23326 Ostojićevo Serbia

info@phenogeneroses.com  
www.phenogeneroses.com  
www.phenogenerosesshop.com

# CONTENT

About Company	02
The Rose Team	05
Rose Breeding	06
Our Collections	09
NEW Climbers Bridges Of Love® Collection	10
Sense Of Love® Collection	20
Edible Taste Of Love® Collection	36
Aurora® Collection	60
Fashion® Collection	70
Reka® Collection	84
Vaza® Collection	96
Freska® Collection	111
Frayla® Collection	122
Pixie® Collection	141
Winterjewel® Collection	154
Mella® Collection	167

# PHENO GENO ROSES

Our story began in a small, family-run nursery in the Netherlands, where roses have been cultivated with care and devotion since 1956. Today, our research, production, and breeding facilities span both the Netherlands and Serbia, and there tradition meets innovation. At the heart of our work is our laboratory, where cutting-edge technologies drive the development of roses that are healthier, more fragrant, and more resilient.

While we cherish our roots, it is the future that guides us forward. Aligned with the principles of the Sustainable Development Goals (SDG), we aim to go beyond aesthetics—our roses offer nourishment, inspiration, and well-being. Our collections reflect scientific advances that promote sustainability, biodiversity, and environmental care. With every bloom, we aim to not only delight but also contribute to a better, healthier world.





## THE ROSE TEAM

In the middle: **Biljana Božanić Tanjga** (General Director in Serbia and a founding member of PGR) – Currently pursuing her PhD, Biljana is deeply involved in every phase of rose breeding. She blends her extensive practical experience with scientific insights to develop and promote innovative phenotype-genotype combinations. Her passion for using science to refine breeding methods ensures continuous progress, driving the creation of unique, high-quality rose varieties that meet both aesthetic and environmental standards.

First on the left: **Olivera Ilić** (Breeder and Data Manager) – With a PhD in Biotechnical Sciences from the Department of Field and Vegetable Crops, Faculty of Agriculture, University of Novi Sad, Olivera has a strong background in research, having spent several years as a scientific researcher. At PGR, she combines her scientific expertise with hands-on breeding, playing a pivotal role in developing new varieties. Her meticulous approach to data management ensures the breeding program is guided by precise insights and informed decision-making.

First on the right: **Deniza Milićev** (Test Facilities Manager) – Bringing nearly a decade of experience working with roses, Deniza continually expands her knowledge as part of the PGR team. With a passion for turning theory into practice, she ensures that new developments are rigorously tested under real-world conditions. Her commitment to detail and innovative spirit contribute to the seamless integration of research outcomes into practical breeding applications, supporting the company's mission to produce exceptional roses.

# ROSE BREEDING

Rose breeding is a long term process, it requires time, deep understanding, and boundless passion. Creating unique varieties is a complex, multidisciplinary task, and the journey to the market demands patience and dedication. Every moment invested in developing a new rose variety makes the final result even more special. Our goal is to create roses that go beyond mere aesthetic values. We take pride in projects such as winter-hardy roses, introducing roses and hips as a source of food, fragrant roses and developing stress and disease-tolerant roses.

This year, we are introducing our first climber collection- Bridges of Love, featuring special climbing roses that result from long-term research, intertwine beauty and resilience, reaching for the sky as they embrace the very essence of love in every bloom.





# OUR COLLECTIONS

Our collections are carefully imagined, each one a unique tale waiting to be told. They are born from the meeting of science and nature, crafted with patience, passion, and reverence for what the earth gives us.

Within these collections lie many worlds—floral design and fragrant bouquets, landscapes and culinary delights, sanctuaries for wildlife, and roses strong enough to thrive where others struggle. We grow them in a palette of colors, forms, and fragrances, designed to complement grand gifts or quiet moments alike.

Yet, our roses are more than ornaments—they are companions for your home, reflections of your identity, and parts of your personal journey.

Whether gracing a garden, inspiring a table, or marking a memory, our roses are meant to become part of your life's story, flourishing in every chapter of your journey.

# BRIDGES OF LOVE® COLLECTION NEW

In the gardens where love blooms endlessly, we have created the Bridges of Love rose collection- an assortment of roses that symbolize the deep connections we forge in life, like bridges that unite us and allow us to overcome all obstacles. Each rose in this collection represents a unique bridge, leading us to a different aspect of love: romance, mystery, wonder, and dreams. Just like the bridges that unite distant places, these roses create pathways to beauty, filling your garden with vibrant colors and heartfelt emotions.

Bridge of Romance™ offers a passionate display of bold blooms, reflecting the intensity of love's first spark. Bridge of Secrets™ whispers with soft, mysterious petals, inviting you to explore the hidden depths of affection. Bridge of Stars™ shines with celestial beauty, its deep purple flowers reminding us of love that transcends the ordinary. Finally, Bridge of Dreams™ transports us to a world of gentle pastels, where love exists in its most peaceful, dreamlike form.

These roses are not only breathtaking to behold but also serve as a reminder that love, in all its forms, is the ultimate bridge that connects us. Let the Bridges of Love® Collection transform your garden into a haven of beauty and emotion, where each bloom tells a story and every petal celebrates the many pathways of the heart.





**BRIDGES OF LOVE® COLLECTION**  
Bridge of Romance™ NEW

**Bridge of Romance™ NEW**

Bozclim011®

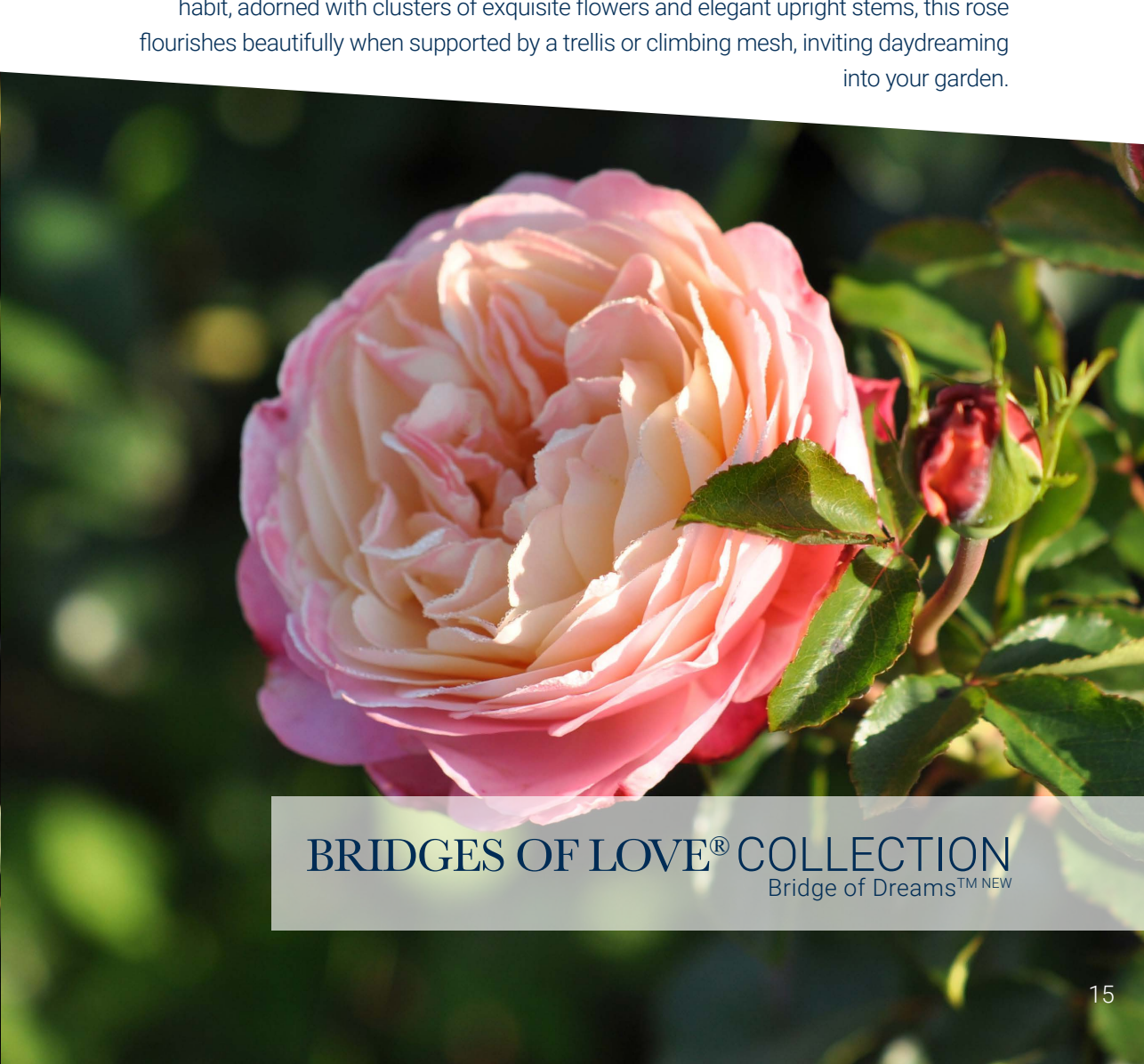
Step into the timeless elegance of the Bridge of Romance™, a climber that brings a vibrant touch to any garden. Its deep red blooms unfold with graceful, double-layered petals, creating a lush, velvety appearance against rich, glossy foliage. Perfect for transforming walls, trellises, or garden arches, this rose adds a captivating sense of beauty and charm to any setting, inviting admiration with every flowering season. With its continuous blooming habit, this rose ensures a lasting display of color throughout the season, making it an enduring favorite for garden enthusiasts. Perfect for creating a romantic atmosphere, the Bridge of Romance™ brings the warmth of love to every corner of the garden.



# Bridge of Dreams™ NEW

Bozclim012®

Drift into a world of fantasy with rose Bridge of Dreams™, a captivating climber that will inspire your imagination with its stunning two-toned blooms. The mesmerizing gradient transitions from deep red buds to soft pink, delicate pastel orange, and sunny yellow as the flowers unfurl, creating a visual feast for the senses. Glossy bright green leaves complement the blossoms, enhancing the rose's vibrant charm. With its graceful climbing habit, adorned with clusters of exquisite flowers and elegant upright stems, this rose flourishes beautifully when supported by a trellis or climbing mesh, inviting daydreaming into your garden.



BRIDGES OF LOVE® COLLECTION  
Bridge of Dreams™ NEW



BRIDGES OF LOVE® COLLECTION  
Bridge of Stars™ NEW

## Bridge of Stars™ NEW

Bozclim013®

Unveiling the enchanting Bridge of Stars™, this climber brings a cascade of vibrant purple blooms, evoking the magic of twilight. The exquisite semi-double flowers, with their striking color, make it an ideal choice for gardeners seeking healthy shrubs that enhance wildflower gardens. Each flower features a charming contrast between its rich purple petals and delicate yellow stamens at the center, creating a visual delight reminiscent of a sky illuminated by stars. As it flourishes throughout the season, this rose is perfect for adding color to fences and pergolas, inviting a sense of wonder to any outdoor space.

# Bridge of Secrets™ NEW

Bozclim014®

Add a touch of mystery and charm to your garden with the Bridge of Secrets™, a climber rose that blends soft pink tones with an old-world elegance. Its semi-ruffled petals form beautifully cupped blooms, gathered in upright clusters that stand out against the matte green foliage. This unique combination gives the rose a timeless, vintage appeal. Perfect for enhancing trellises or wire structures, Bridge of Secrets™ climbs gracefully, adding depth and luxury to your outdoor spaces. With its elegant climbing habit and continuous blooming, this rose ensures a romantic and unforgettable presence in any garden, creating an inviting atmosphere full of beauty and intrigue.



**BRIDGES OF LOVE® COLLECTION**  
Bridge of Secrets™ NEW

# SENSE OF LOVE® COLLECTION

Living fast in the modern, urban world, we often forget about ourselves and our health. That is why we have created a collection of roses whose petals can be used to balance our bodies and improve mental and physical health safely. We are proud to present our collection Sense of Love, as a combination of aromatic fragrance and beauty, feminine elegance and tenderness, enjoyment and relaxation, harmony of nature and human health. As such, the fragrant roses from this collection will not only decorate our gardens, balconies, and parks but will find a wider application in everyday life, namely in the field of cosmetics in the production of perfumes, baths, balms, masks, shampoos, lotions, inhalation drops, aromatic massages. We created the magical Sense of Love collection to help the modern world to preserve and improve our health with the power of fragrance.





SENSE OF LOVE® COLLECTION  
Natural Aroma™

## NATURAL AROMA™

Bozaron014®

Calmness and beauty of nature are the essence of this pastel apricot colored rose. Large number of petals form wonderful round flowers gathered in clusters which will enrich your garden with beauty and fragrance. Scent of this rose is a perfect mixture of elderflower, anise, camphor tree, honey and a musk. It resembles the scent of fresh herbs, green forest, and freshly picked fruits. It forms luscious medium sized shrub suitable for rose beds and combines well with evergreen shrubs.

# MAGIC AROMA™

Bozaron012®

Very floriferous and aromatic, rose Magic Aroma™ will truly bring some spectacular atmosphere into your garden. Bright pink flowers gathered in upright clusters completely cover the plant during the flowering season bringing the scent of fresh apples, mint and green forest in combination with sweet fruits and balsam. It forms a small to medium compact shrub which is suitable for pots, but its beauty shows much better if planted in larger groups.



SENSE OF LOVE® COLLECTION  
Magic Aroma™



SENSE OF LOVE® COLLECTION  
AniStar Aroma™

## ANISTAR AROMA™

Bozaram020®

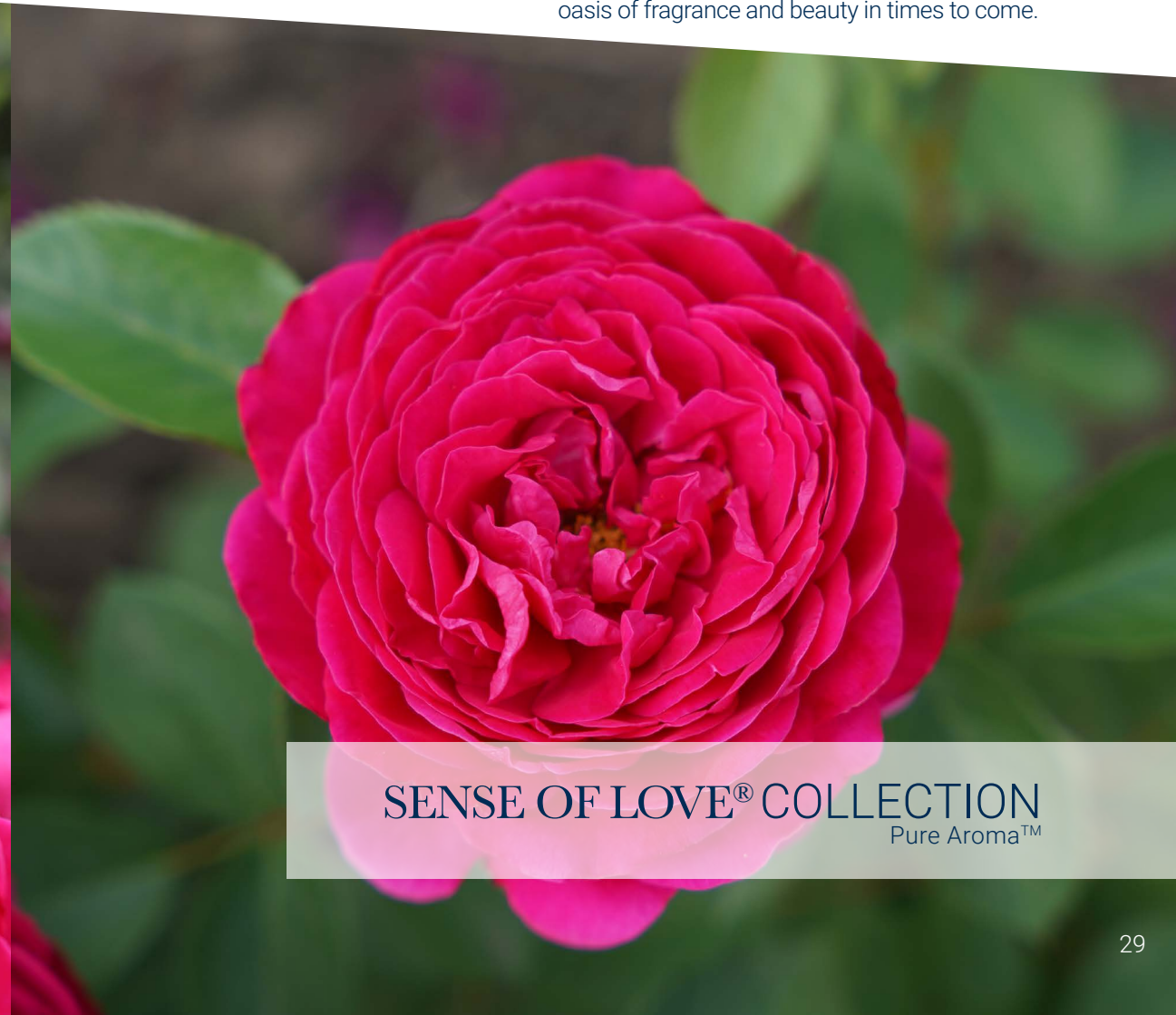
A true star of the Sense of Love collection, a rose of gentle look contrasting intensive scent you will surely remember for long. Soft apricot colored petals hold a powerful aroma of anise which powerfully dominates the fragrant profile of this rose with a bit of musky notes with a dash of bergamot. Round flowers are gathered in clusters resembling bouquets in combination with green shiny leaves that form a compact bush which looks wonderful when planted in larger groups. It combines well with evergreen bushes and hydrangeas.

# PURE AROMA™

Bozaron011®



Rose Pure Aroma™ boasts the characteristic warm, deep pink color of the petals. Its full flowers form large clusters, and the strong branches with healthy, dark green leaves make this rose ideal for rich bouquets of luxurious fragrance. Elegant, full blooms release a powerful floral-fruity scent as a unique blend of raspberry, lemon, bergamot and sweet fennel. It is a medium-sized shrub, suitable for luxurious rose gardens or flower beds in combination with silver-leaved perennials. It blooms throughout the season and attracts bees and butterflies. Their divine perfume scent will turn any sunny garden into a heavenly oasis of fragrance and beauty in times to come.



SENSE OF LOVE® COLLECTION  
Pure Aroma™





SENSE OF LOVE® COLLECTION  
Adore Aroma™

ADORE AROMA™

Bozaron015®

Rose Adore Aroma™ will enrich your garden with its beautiful, seductive bright purple flowers and long stems. The striking color and multi-flowered habitus make this rose perfect for landscaping. It combines well with roses of similar growth, but also with medium-sized perennials. This rose can also be grown in pots where it forms a compact, round appearance. Fragrant notes of mint, grapefruit, orange and coniferous resin give this rose a refreshing, pleasant, medicinal, herbal scent. It forms a medium-sized bush that spreads a wonderful fragrance throughout the season.

# UNIQUE AROMA™

Bozaron016®

This beautiful rose has an unusually strong floral fragrance dominated in top notes by the aroma of anise in combination with apple and lemon. The unique fragrance gave it the name "Unique" as the jewel of this collection. Bright pink flowers that change to a soft, light pink during the season provide a mesmerizing effect. It forms a strong bush of upright growth covered with rich clusters of flowers and spreads a wonderful fragrance to the surroundings throughout the season. As a compact medium-sized shrub it is perfect for planting in the middle of a flower bed or in smaller groups in a prominent place. It is also suitable as a potted plant for planting in larger pots. However, the strong perfume scent is by far the most impressive feature of this rose.



SENSE OF LOVE® COLLECTION  
Unique Aroma™



SENSE OF LOVE® COLLECTION  
André Rieu™

ANDRÉ RIEU™

Bozaron018®

Inspired by André Rieu's superb music that touches the heart, we created a rose with intense red flowers and a strong, refreshing fragrance. Fragrant notes of lemon, orange and mint with a musky base give this rose an irresistible, refreshing, gentle fragrance. This beautiful rose with a graceful form and intense red-pink color will enrich any garden regardless of its style and size. It blooms intensively and the double, vivid red flowers with huge number of petals really take your breath away. It is quite a healthy plant and does not require any special maintenance. The rose is nature's ultimate art and a perfect partner to music.

# EDIBLE TASTE OF LOVE® COLLECTION

Taste of Love® means evoking tradition, going back through time to experience ancient trades of preparing rose water. It means re-discovering rituals of food preparation where food for soul and food for body come together. It captures imagination and brings the art of plate decoration to a whole new level with playful and colourful rose petals.

Bred and created with equal amount of love and science, these edible roses are not only beautiful but also healthy as they are packed with antioxidants and vitamins. Each of these roses has been carefully selected and tested to provide the best possible taste and texture. Floriferous and suitable for growing in organic conditions, they provide an abundance of delicious and delicate flowers to use and enjoy in your garden, balcony and kitchen.



# Rosa 'Grapefruit'™ NEW

Bozedib029®



## Edible rose with a sweet & tangy refreshing fruity taste

Rosa 'Grapefruit'™ impresses with its upright branches and a lovely display of semi-double, orange-pink blooms that open generously, filling the garden with fragrance and color. These blossoms offer a refreshing sweetness, perfect for those who appreciate edible roses with a tangy twist. With a delicate nature that thrives in organic settings, this rose is both vibrant and healthy. Rosa 'Grapefruit'™ brings a soft elegance to any garden, creating a welcoming atmosphere with its abundant flowers and refreshing scent.



TASTE OF LOVE® COLLECTION  
Rosa 'Grapefruit'™ NEW



TASTE OF LOVE® COLLECTION  
Rosa 'Citroncello'™ NEW

## Rosa 'Citroncello'™ NEW

Bozedib026®

### Citrus aroma with a delightful sweet taste

Meet Rosa "Citroncello"™, a delightful addition to any garden that captures the essence of sunny days. This charming shrub showcases captivating light yellow blooms that evoke the warmth of summer sunshine. Infused with a luscious citrus fragrance, each flower invites you to enjoy its sweet, refreshing flavor, reminiscent of zesty lemons on a warm afternoon. With its elegant upright branches and glossy dark green leaves, this rose not only enhances your garden's aesthetics but also invites culinary creativity. Perfectly suited for pairing with other vibrant perennials, Citroncello™ thrives in a variety of settings, making it a versatile companion in both-the garden and the kitchen.

# Rosa 'Red Passion'<sup>TM</sup>

Bozedib025®



## Edible rose with sweet and fruity aroma

Name of this rose truly describes its appearance, this rose will evoke your passion with the captivating carmine red color with shades of lilac and blush, fresh scent and taste. Its taste is a wonderful combination of rosy freshness with a little bitter, slightly peppery and nutty flavour. Wonderful flowers are borne in bouquet-like clusters contrasting shiny dark green leaves. It forms a compact medium sized bush covered in flowers which blooms continuously through the season. Very healthy and easy to maintain, this rose is a bullseye choice equally for landscaping and culinary experts.



TASTE OF LOVE<sup>®</sup> COLLECTION  
Rosa 'Red Passion'<sup>TM</sup>



## Rosa 'Eveline Wild'<sup>TM</sup>

Boznatafra®



## TASTE OF LOVE<sup>®</sup> COLLECTION

Rosa 'Eveline Wild'<sup>TM</sup>

### Edible rose with a sweet fruity flavour

Petals of this rose have a silky texture and a flavour of honey and apricots. It is perfect for confectionery, especially chocolate, but it also goes well in fruit or light summer salads.

Rosa 'Eveline Wild'<sup>TM</sup> is a medium-sized shrub with somewhat nodding branches due to large terminal clusters with plenty of apricot-coloured flowers. This variety is quite suitable for the middle of the border. However, due to its compact size, it can also be grown in larger pots on balconies. It mixes well with medium-sized perennials as well as with other roses of light colours. Very healthy and easy to maintain.



# Rosa 'Jordi Roca'<sup>TM</sup>

Bozedib022®



## Edible rose with sweet and fruity aroma

Sweet fruity taste of this rose makes it perfect for all kinds of sweet delights such as rose petal preserve, but it also goes well in Oriental dishes or energy salads. It is an excellent variety for homemade rose water. Lovely apricot-orange colour of petals makes them an irreplaceable ingredient for food decoration whether you use them fresh, dried or candied.

Its straight stems bear clusters of remarkably big flowers with large petals and sweet fragrance. Its beauty stands out the best when planted in groups in combination with patio roses or medium-sized perennials.



TASTE OF LOVE® COLLECTION  
Rosa 'Jordi Roca'<sup>TM</sup>



## Rosa 'Nadia Zerouali'<sup>TM</sup>

Bozedib021®

## TASTE OF LOVE® COLLECTION

Rosa 'Nadia Zerouali'<sup>TM</sup>



### Edible rose with a fresh lemon taste

Due to its strong citrus fragrance and aroma, it makes a colourful addition to meals where you would normally use lemongrass or balm, since the taste is similar but of much smoother texture and more joyful in colour. Nadia, a famous 24Kitchen chef, recommends it for use in Arab-Mediterranean cuisine where its aroma stands out the best. It has a very strong medium-sized shrub, healthy and resilient. Its large creamy yellow flowers are borne singly or in open clusters, being very attractive in appearance and suitable as a vase flower. Plant it in the back of the border where its lovely yellow colour will give a good background for smaller roses of vivid colours or medium-sized perennials.

# Rosa 'Renée van Wegberg'™

Bozmilefra®



## Edible rose with raspberry taste

Delightfully scented and with a sweet taste of raspberries, this rose is ideal in combination with fruits. It is perfect for jams, candies or other sweets. Colour holds well during cooking or drying so it is suitable for processed food. It also goes well in salads where it adds colour and flavour to your ordinary greens. Rosa 'Renée van Wegberg'™ is a medium-sized shrub, perfect for planting next to porches, even as a potted plant on balconies. Cup-shaped flowers of this rose have large, fragrant petals of smooth texture. Its lively pink colour stands out the best when planted next to light-green or silver leaved decorative shrubs. It prefers full sun.



**TASTE OF LOVE® COLLECTION**  
Rosa 'Renée van Wegberg'™



## Rosa 'Theo Clevers'<sup>TM</sup>

Bozkatafra®



TASTE OF LOVE<sup>®</sup> COLLECTION  
Rosa 'Theo Clevers'<sup>TM</sup>

### Edible rose with a delicate strawberry aroma

Large clusters of fully double pink flowers that bloom profusely throughout the season ensure that you will have an abundance of petals to satisfy all your culinary delights! Due to its sweet strawberry flavour, it is best used in confectioneries such as rose petal preserve, rose syrup or rose water that you can add to any cake. They also make a colourful addition to fruit salads or cold beverages. This medium-sized shrub goes along with other shrub roses as well as medium-sized perennials. You can plant them next to pergolas or porches where they will give an astounding effect in combination with perennial vines and climbers.

# Rosa 'Pear'™

Bozedib023®



## Edible rose with a sweet and sour pears taste

Silky texture of Rosa 'Pear'™ gives it a wide range of use as decoration on cakes, salads or various types of gourmand meals since it will add an interesting appeal to your dish while improving the flavour. You can also candy it and store it in a jar for the entire year. This gentle medium-sized shrub bears flowers in loveable clusters that come in an abundance and bloom continuously opening their silky flower buds one after another. It is suitable for the back of the border, but you can also grow it in larger pots or containers on your terrace or balcony. It prefers partial shade in the hottest part of the day, for its gentle pink colour gives the best display in moderate sun.



**TASTE OF LOVE® COLLECTION**  
Rosa 'Pear'™



TASTE OF LOVE® COLLECTION  
Rosa 'Raspberry'™

## Rosa 'Raspberry'™

Bozedib024®

### Edible rose with a sweet flavour of fruit candies

Sweet and pleasant aroma of this rose makes it suitable for all kinds of confectionery and beverages. Excellent variety for homemade rose water. Its eye-appealing deep pink colour and numerous small petals give it a wide range of use as food decoration. It is a medium-sized compact shrub with numerous, rich flowers borne in clusters flowering all season long. It is perfect for planting in the middle of the border, smaller growing habitus makes it suitable for growing in larger pots on terraces or balconies.

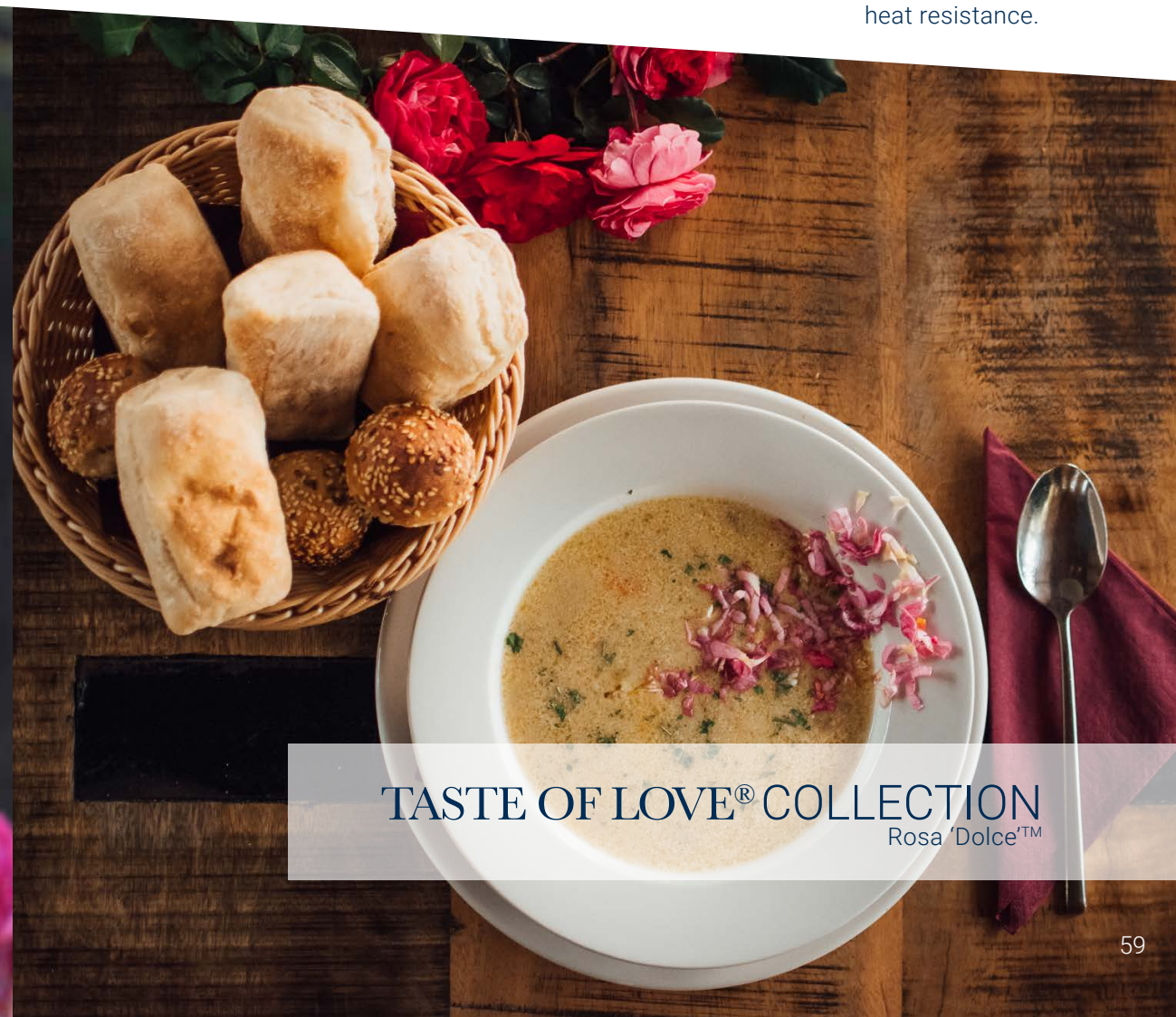
# Rosa 'Dolce'<sup>TM</sup>

Bozreka023®



## Edible rose with sweet taste of red currants

The aroma of this rose is a refreshing combination of sweet and sour. Dolce's<sup>TM</sup> fragrance is delicately fruity with hints of citrus. Petals are numerous and soft, suitable for decoration, retaining their strong cyclamen colour well during processing. This is a medium-sized shrub with strong and upright branches, each bearing a tight cluster of double flowers. Extremely floriferous in nature, this variety blooms throughout the entire season. It likes companionship of medium sized perennials of creamy colours. Best planted in full sun. It has a good disease and heat resistance.



TASTE OF LOVE<sup>®</sup> COLLECTION  
Rosa 'Dolce'<sup>TM</sup>

# AURORA® COLLECTION

Unusual blend of strength and daintiness, beauty and resilience, a harmony of nature and urban progress, all which are imbedded into this powerful collection.

Aurora® roses present a collection of Hybrid Rugosas bred specially for rose lovers in difficult climates. Aurora® roses are drought and heat resistant, and, when grown on their own roots these roses can tolerate poor, heavy and saline soils. They have a strong, bushy habitus, perfect for hedges or natural landscaping. Blooming is abundant and consistent throughout the year, while also providing plenitude of bright orange hips which are edible and can be considered a superfood in their own right.

Fragrant flowers are famous for attracting pollinators, making this collection a must have in wildlife gardens.





# AROMATIC™ AURORA®

Bozhrug755®

Delicately pink with soft hues of mauve, flowers of this rose are exceptionally fragrant and beautiful. As all Rugosa roses, this is a strong shrub, very reliable and healthy. Pollinators love this plant as its aromatic flowers provide a long blooming display from early spring to late autumn. It is best used for hedges or back of the border. It is tolerant to poor soils but prefers to be planted in full sun.



AURORA® COLLECTION  
Aromatic™ Aurora®



AURORA® COLLECTION  
Butterfly™ Aurora®

## BUTTERFLY™ AURORA®

Bozbuttaur®

Delicate as a butterfly but tough as nails, this amazing rose is a must-have of any garden. Flowers of this rose are pure white in colour, they are simple and have no more than five petals. Their open centre and abundance of pollen makes them a favourite among pollinators. This is a highly floriferous bush, constantly producing new flowers and blooming well into autumn. It is highly fruit-bearing and if you grow Rugosa roses for their hips, this is the variety you should plant in your garden. Suitable for hedges and back of the flower border.

# BERRY-BUSH™ AURORA®

Bozberraur®

The beauty of this rose lies in its simplicity and ease of care. Flowers are charmingly fragrant and extremely floriferous, blooming all season long. Shape of the flower is open, and it has only five petals, however, this is an exact reason why it is so popular among pollinators.

It will attract bees, butterflies, bumblebees, and other beneficial insects to your garden! Berry-Bush™ produce an incredible number of hips that can be used for jams, marmalades, even as bird food. It is a strong shrub and prefers a lot of space, so it is best to plant it in the back of the border.



AURORA® COLLECTION  
Berry-Bush™ Aurora®



AURORA® COLLECTION  
Purple™ Aurora®

## PURPLE™ AURORA®

Bozpurpaur®

A stunning Tyrian purple colour of this rose is royally elegant and befit a garden of a king. Incredibly floriferous and superbly fragrant, this variety is fully double, bearing flowers in loose clusters whole season long. Its wonderful scent, a mixture of oriental spices and rose water, is a favourite among bumblebees. This is a well-shaped bush of robust but well-behaving nature, perfectly suitable for hedges and dry terrains.

# FASHION® COLLECTION

Inspired by the art of home decor, modern lifestyle and architectural design, our exclusive Fashion® collection is a colourful discovery of style, a homage to textures, beauty and details. It directs the visual focus and evokes emotions.

This is a collection for all those that want to make a statement about their garden & home.

These effective roses have been carefully bred to be colourful, easy-to-care plants reflecting the modern needs for beautiful but limited outdoor spaces and urban gardening. Chic and playful, each variety possess a striking beauty of fully double flowers and powerful colours, all bound together by enticing fragrance. Floriferous and care-free, these roses combine well with other elements in your garden, terrace or balcony.



# RETRO™ FASHION®

Bozretrfas®

This charming yellow rose has that unique old-fashioned look which will give your garden a special touch of old times, a truly classical rose, made for admiring. Its golden-yellow petals are densely packed in a cup shaped flower. Good branching gives it a wonderful compact look, covered in small clusters of flowers, wonderfully combined with bright green leaves. Healthy and easy to maintain this rose is an equally good choice for growing in large pots or in gardens.



FASHION® COLLECTION  
Retro™ Fashion®



FASHION® COLLECTION  
Young™ Fashion®

## YOUNG™ FASHION®

Bozyoungfas®

Ruffled petals of this unique rose vary from vibrant orange-pink to pale purple-pink and are a true refreshment to the surrounding. Numerous flowers are borne in rich two coloured clusters and will surely be the impressive detail of your garden. Young Fashion rose is highly floriferous and it enriches its surrounding with pleasant, fresh scent. This unique rose is made for small gardens and balconies as it is suitable for pots. It is very resistant and care-free.

# CHIC™ FASHION®

Bozchicfas®

An eye-catching rose of intense red flowers and gentle fragrance. Flowers of this variety are fully double with soft velvety-red petals. This is a small to medium-sized shrub of good branching and rounded growth habit. Stems are short and upright, each finishing with a usually single flower on top. This beautiful red rose is a perfect plant for small gardens where it can be grown in pots or outdoors in a sunny position.



FASHION® COLLECTION  
Chic™ Fashion®





FASHION® COLLECTION  
Hippie™ Fashion®

## HIPPIE™ FASHION®

Bozhippas®

Striking orange petals with a silver reverse make this rose the centrepiece of every garden design. Flowers are fully double with soft multicoloured petals, delicately fragrant and exceptionally beautiful. This is a medium-sized, well-balanced shrub of intense blooming. It is healthy and easy to maintain. Its small size makes it suitable for growing in pots, in sunny positions on your porch, terrace or balcony.

# PERFUME™ FASHION®

Bozperffas®

Elegantly pink and luxuriously floriferous, this is a rose of intense, perfume-like flowery fragrance. It is a quite compact and small bush with short but straight stems, each bearing individual, double flowers. Flower buds are high-centred and very attractive in appearance.

Short growth and strong fragrance make it perfect for growing in pots on balconies, terraces or in small gardens.



FASHION® COLLECTION  
Perfume™ Fashion®



FASHION® COLLECTION  
Trendy™ Fashion®

## TRENDY™ FASHION®

Boztrenfas®

Beautiful orange-pink colour shades and its extremely floriferous nature make this rose a must have plant in any garden design. Flowers of this rose are borne in large clusters, petals are soft and slightly ruffled in appearance. This is a well-branching and bushy variety, very healthy and easy to maintain. It is suitable for growing in pots or as a garden plant in a sunny position.

# ABUNDANT REKA® COLLECTION

Inspired by the Renaissance gardens and their precise lines with impressive flower borders, Abundant Reka® collection is designed to bring visual highlights into effective landscapes.

Translated from Serbian as 'the river', varieties from Reka® collection promise to bring you a plenty of flowers month after month, year after year.

Excellent compact growth and symmetry fit perfectly into formal garden styles with a wide range of colours from pastel to intense, making their combination with other plants and garden elements practically infinite.

Proudly named after Serbian and European major rivers, each of these striking varieties has its own story to tell, vivid and picturesque like traditional European tapestry. Healthy and floriferous, these roses are a statement of plenty and charm in every scenery.





REKA® COLLECTION  
Lim™ Reka®

LIM™ REKA®

Bozreka028®

White and soft yellow petals of this rose create a spectacular effect in contrast with shiny dark green leaves. Rich clusters of double flowers bloom in abundance through the whole season. It forms a small compact shrub which gives the best visual effect if planted in groups so they can resemble a river of roses. It is a carefree and healthy plant suitable for large pots.

# DUNAV™ REKA®

Bozreka021®

Named after Europe's second-largest river, this extremely floriferous rose has a cheerful pink color and a compact, medium-sized growth. Flowers are borne in upright clusters which cover the plant completely during the peak of the season. A very healthy variety that will perform well even in less ideal conditions. Due to its compact growth, it is possible to grow this rose in pots on a balcony, but it provides a much more impressive effect when planted in larger groups.



REKA® COLLECTION  
Dunav™ Reka®



REKA® COLLECTION  
Nera™ Reka®

## NERA™ REKA®

Bozreka027®

Attractive orange-pink colour and abundance of flowers set this plant as a visual centrepiece of any garden. Flowers are small to medium-sized, borne in large clusters and blooming continually during the entire summer. This is a shrub of medium size, suitable for the middle of the flower border. It gives best impression when planted in groups. Very healthy and trouble free. Drought tolerant once established.

# MORAVA™ REKA®

Bozreka026®

Proudly named after Serbia's largest river, this highly floriferous rose is completely covered with dark-red flowers during the whole summer season, emphasizing the richness of life in the Morava river and its riverbanks. Loose clusters are especially charming if planted in full summer sun. Its compact size and good health make it a perfect landscape rose. It is suitable for pots, but it shows the best of its features when planted in large groups.



REKA® COLLECTION  
Morava™ Reka®





REKA® COLLECTION  
Tara™ Reka®

## TARA™ REKA®

Bozreka024®

Probably the best variety in our Reka® collection. Striking orange-red colour and extremely floriferous nature of this rose make it a perfect choice for landscape design. It is a small, rounded plant with interesting flowers that change colour from intense red to fading pink as they age and that can last for more than a week after opening. Due to its size, it is also suitable for pots. It requires low maintenance as this rose is exceptionally healthy and trouble-free.

## VAZA® COLLECTION

Embrace the new dimension of garden roses with our compact cut flower collection. Vaza, a Serbian word for vase, describes the use of these roses perfectly – not only that they will look stunning in your garden, but they will also make a fascinating table centrepiece in every home.

These rose bushes are short in height, have good branching habitus and carry blooms on strong stems which makes them perfect for floral arrangements of any kind, enriching them with their pleasant fragrance.

Warm hues and gentle texture of their petals bring light into any interior regardless of its style. These roses will look elegant and attractive both in modern and classic home designs. They can be used alone or in combination with decorative grasses and ferns, as well as with other flowers like hydrangeas, lilies, anemones or delphiniums. These versatile roses are the most tender gift anyone can receive.



# BURGUNDY™ VAZA®

Bozvaz017®

Petals of this lovely rose are of that perfect velvety shade that poets and painters have been trying to capture for ages. This truly amazing, burgundy-colored rose has perfectly straight, almost thornless stems, while double flowers of intense color are borne individually and abundantly through the whole season. It is short and compact, suitable for pots and the front of the border. Its use in floral arrangements is defined with its strong red color and it is best used together with cream roses or peonies, chrysanthemum, anemones, as well as ferns and eucalyptus.



VAZA® COLLECTION  
Burgundy™ Vaza®



## LEMON™ VAZA®

Bozvaz011®

Large, double flowers and strong clusters of this variety open to form impressive bouquets of sweet, intensive fragrance. Calling this rose yellow does not do it justice, as its petals are of that creamy apricot colour in the centre that gently fades to shades of yellow and ivory towards the edges. It is a medium-sized shrub, suitable for the middle or back of the border. As a cut flower, it is suitable for large, dramatic arrangements in combination with delphinium, thistle, viburnum and green or blue hydrangea.



VAZA® COLLECTION  
Carmine™ Vaza®

## Carmine™ VAZA®

Bozvaz018®

Name of this rose says it all – it is a variety of extraordinary carmine-red colour and subtle sweet fragrance. Charming, perfectly shaped flowers are borne usually singly on straight stems. It is a small shrub, perfect for front to middle of the flower border. It can also be grown in pots where it forms a compact, rounded shrub. As a cut flower, it loves the company of delphinium and veronica, white daises, lilacs or foxglove.

# PEACH™ VAZA®

Bozvaz019®

Surely one of the best varieties in Vaza® collection, Peach™ has that warm shade of orange and pink colour blending together to create elegant silky texture of its petals. Gentle and feminine, cup-shaped flowers of this rose are usually borne singly but can also form small bouquet-like clusters. Stems are straight and almost thornless, giving this small bush a rounded and compact look. It is suitable for pots since it requires low maintenance due to its good tolerance to stress and diseases. It is perfect for rounded bouquets where its gentle hues stand out the best if used in combination with dusty miller.



VAZA® COLLECTION  
Peach™ Vaza®

# PEARL™ VAZA®

Bozlenfra®

A true pearl of this collection, this gentle rose of creamy-white colour will delight you with its charm. Perfectly round flower buds, borne singly or in densely packed clusters, have sweet fragrance and a long vase life. It is a healthy bush with dark green leaves making a lovely contrast to the colour of its snowy flowers. It is perfect for planting in the back of the border in combination with other roses or medium-sized perennials. In flower arrangements, it prefers company of red, purple and creamy flowers like anemone, lilacs and daises.



VAZA® COLLECTION  
Pearl™ Vaza®



VAZA® COLLECTION  
Pink™ Vaza®

## PINK™ VAZA®

Bozvaz014®

Have no doubt that this warm pink rose will win your heart at first glance. Its cup-shaped flowers are intensively fragrant with notes of lilac and fruit. It is a healthy, medium-sized shrub, bearing flowers in rich clusters. The best place for planting this rose is in the middle of the border in combination with perennials or near porches and balconies due to its strong scent. In flower arrangements, it fits best when placed with flowers of a similar shade of pink, as well as eucalyptus or moluccella for more formal, vertical arrangements.





## STRIPED FRESKA® COLLECTION

Inspired by the painting technique, our collection of striped roses presents a unity of art and nature. Freska, Serbian version of Italian word fresco, has been employed in wall painting since antiquity. In Serbian ecclesiastical art, it has been in practice since the 13th century and it decorates the walls of well-known Serbian monasteries. As if an invisible painter had struck his brush upon the gentle petals of the roses, every single variety of this collection is a masterpiece of elegance. Vivid colours of these roses will undoubtedly make them a centrepiece of your garden regardless of where you plant them.

# KONSTANTINA™ FRESKA®

Bozkonsfre®

Truly amazing variety of deep-pink colour dappled with white lines is a must-have of rose gardens. Attractive, double flowers gathered in large clusters on long stems with healthy leaves are perfect as vase flowers. It is a shrub of medium size, suitable for rose beds or in combination with other perennials. Without a doubt, this is a rose you will be enchanted by.



FRESKA® COLLECTION  
Konstantina™ Freska®



FRESKA® COLLECTION  
Antica™ Freska®

## ANTICA™ FRESKA®

Bozantifre®

Charming and alluring, this is an orange pink variety with white, occasionally yellow, stripes and floriferous blooming. Flowers are borne in clusters that bloom one after another all season long. This is a medium-sized shrub, suitable for the middle of the flower border in combination with other perennial plants. It is suitable for growing in pots if enough space and sun is provided.

# ROMANA™ FRESKA®

Bozromafre®

Noticeable even from a distance, vividly striped flowers of this rose are cheerful and sunny. Slightly wavy edges of red and yellow petals are gathered around a button-eye in the centre. It blooms profusely and in clusters. It is suitable for planting in pots, but it also loves companion of other garden plants of creamy colours. It is a perfect plant for the middle of the border.



FRESKA® COLLECTION  
Romana™ Freska®



FRESKA® COLLECTION  
Vizantina™ Freska®

## VIZANTINA™ FRESKA®

Bozvizafre®

Gentle petals of this orange-white rose are highlighted by the colour of its dark leaves. It blooms continually throughout the season, giving bud after bud of healthy new flowers. Delicate fragrance proves that this rose has much more to offer than just a visual sensation. It is well suited for mixed borders in combination with medium-sized perennials.

# VALENTINA™ FRESKA®

Bozvalfre®

The frontrunner of this collection, truly amazing Valentina™ Freska®, is a pride of any garden. Distinctive velvet red colour, streaked with shades of yellow and white is eye-catching and alluring. Flowers are borne on long, single stems and are perfect for use as vase flowers or in home-made flower arrangements. It is a strong, large shrub suitable for rose beds or the back of the border in combination with medium-size perennials.



FRESKA® COLLECTION  
Valentina™ Freska®

# FRAGRANT FRAYLA® COLLECTION

Frayla /frajla/ - Serbian name from the beginning of the 19th century for a versatile, charming and gentle woman.

This collection is dedicated to commendable women in Serbian history, such as humanitarians, scientists, queens and princesses, artists and explorers. Their names are a source of inspiration and gratitude, and now they will forever be embedded in the fragrance of our roses.

Motivated by Eastern Damask scent of Bulgarian Rose Valley and Turkish Isparta, inspired by Old English and traditional French style, we've created fragrant roses for every garden.

Each variety of the Frayla® collection has a note of women's elegance, modesty and sophistication. They are coloured with different roles in recognisable and prestige landscaping.



# ALEXIA™ FRAYLA®

Bozalexfra®

Vibrant pink color of charming Alexia Frayla® makes it a perfect standout rose. Numerous petals form beautiful large flowers with sweet fragrance which are borne singly or gathered in small clusters. It forms a medium sized bush with shiny green leaves, very healthy and carefree. Because of its wonderful upright stems and eye-catching flowers you can easily use it as a bouquet flower.



FRAYLA® COLLECTION  
Alexia™ Frayla®





FRAYLA® COLLECTION  
Jelena™ Frayla®

## JELENA™ FRAYLA®

Bozjefra®

This is a rose of unusually strong fruity fragrance with the dominant background of apricot which makes Jelena™ Frayla® one of our best scented varieties in the Frayla® collection. The flowers begin as lovely little buds, opening to half-enclosed deep cups and eventually becoming perfectly open rich flowers with apricot centre and paling edges. This rose can be ideally combined with other perennials and higher shrubs in the background.

# MINA™ FRAYLA®

Bozminafra®

This gorgeous rose with the vibrant pink color will enrich any garden regardless of its style and size. Large petals of this rose variety are arranged in round, perfectly shaped flowers that beautifully stand out on its dark, healthy green leaves. Its sweet, strong fragrance makes this rose an excellent choice for planting next to open terraces and porches.



FRAYLA® COLLECTION  
Mina™ Frayla®



FRAYLA® COLLECTION  
Vera™ Frayla®

VERA™ FRAYLA®

Bozflorfas®

An utterly amazing variety of fully double, cup-shaped flowers and intense honey & peach fragrance. Flowers of this fascinating variety have a creamy yellow color with hints of the apricot and silver outer layer of soft, silky petals. It is a strong shrub of upright growth. Flowers are borne in clusters throughout the entire season.

This variety is perfect for the back of the flower border or as a framework plant of your balcony flower design. Its incredible fragrance, color, and health make this rose an eye-catching gem for any garden.

# MARIJA™ FRAYLA®

Bozpipflam®

Exquisitely large fully double flowers of perfect round shape are a must have in every garden. Strong perfume fragrance is the most prominent feature of this intensive pink rose. It is a strong and healthy variety with upright branches, very floriferous. Flowers are quite large compared with the relative size of the bush. It can be grown in larger pots, but it gives its best display in the garden, surrounded with perennials and ornamental grasses.



FRAYLA® COLLECTION  
Marija™ Frayla®



## DRAGA™ FRAYLA®

Bozdragfra®

Draga™ Frayla® intensive recurrent blooming produces a wave upon wave of scarlet petals. This variety bears quite large, slightly rounded flowers with delicate and fresh scent notes. It forms a compact shrub with plenty dark green and disease-resistant foliage. Its excellent, low, strong, bushy habitus holds flowers up high in a lively manner. Ideal variety for rose beds and planting in groups.

# ISIDORA™ FRAYLA®

Bozisdfra®

Isidora™ Frayla® provides us with magnificent golden-yellow, open cupped flowers placed on long stems. Notes such as oakmoss, amber and sandalwood create a fresh, pleasant woody scent. The foliage is that of a typical Old English rose, being smooth and of a lovely shade of pale green. It is suitable for growing with ornamental grasses and dwarf perennials.



FRAYLA® COLLECTION  
Isidora™ Frayla®



FRAYLA® COLLECTION  
Olivera™ Frayla®

## OLIVERA™ FRAYLA®

Bozolivfra®

Lovely, unusually flat bloom has many soft yellow petals that fade to creamy white as the flower gently opens. Its rich flower clusters create an enchanting effect in every garden. Olivera™ Frayla® makes a small, neat shrub which is particularly good for rose beds or in combination with evergreen shrubs. There is a gentle touch of tea rose fragrance with delicious hints of honey and fruit.



## PIXIE® COLLECTION

Our Pixie® collection is represented by two types of patio roses: miniature roses ranging from 20 to 35 cm and groundcovers ranging from 40 to 70 cm.

Miniature roses from our Pixie® collection have a diverse usage in container cultivation, in large terracotta containers or in small pots on window-sills. They are a perfect choice for your balcony or roof garden.

Our groundcovers are ideal for public and private landscaping. What makes them special is a vast range of colours, flower shapes, their continuous flowering and dense and sturdy growth. Their size and delightful appearance make them a memorable gift for your loved ones...



# MILKY™ PIXIE®

Bozmilpix®

Adorably small, flowers of this miniature rose have pure white colour that will catch every eye. It is extremely floriferous, leaving this plant completely crowded with tiny flowers making it almost look like it's covered in snow. Flowers are rosette-shaped and fully double giving this tiny rose a fluffy appearance. Perfect for pots and small gardens this little Pixie® will make any space brighter.



PIXIE® COLLECTION  
Milky™ Pixie®



PIXIE® COLLECTION  
Mauve™ Pixie®

## MAUVE™ PIXIE®

Bozivko®

Mauve™ Pixie® is the pride of our collection of patio roses. This rose is unique for its bright lipstick red colour of the flower, which will continue to be a gem of your garden throughout the year since it blooms repeatedly. Clustered flowers dominate over small, healthy leaves. It is an excellent choice for planting in mixed borders or for growing in pots. Delicate, sensual fragrance is almost implied for such a beautiful rose, but it will still leave you pleasantly surprised.

# GAUDY™ PIXIE®

Bozgaudpix®

Definite eye-catcher, this striped miniature rose is sure to stand out in any garden arrangement. Its many petals in the shape of a rosette in two striking, perfectly aligned colours, give this rose a distinctive and astonishing look. In the right light, the flowers present themselves as having an almost pearlescent colour, moving from a gentle pink to a pure white colour. The bush is a small and dense one, perfectly fitting in borders, but the sheer beauty of this flower will leave it up to your creativity to use it anywhere you like.



PIXIE® COLLECTION  
Gaudy™ Pixie®



PIXIE® COLLECTION  
Blush™ Pixie®

## BLUSH™ PIXIE®

Bozbluspix®

Blush pink in colour, this rose has a playful and serene sense to it. It is an excellent border plant, but performs exquisitely as a pot rose as well. Although miniature in size, with miniature flowers and leaves, this rose will establish itself as a big and inevitable part of your garden decoration. Add to this its remarkable disease resistance and the fact it remains vigorous even under unfavourable conditions, and it is certain that this rose will establish itself as one of your all-time favourites.

# CORAL™ PIXIE®

Bozcorapix®

This unusual groundcover stands out at first glance with its unusual dark red colour and coral-like flower shape. It has excellent dense, branching habitus and it produces an abundance of small flowers throughout the whole season. Healthy green leaves and striking flower appearance make it a fine choice for every garden. Its beauty stands out the most when planted in combination with other patio roses or small perennials.



PIXIE® COLLECTION  
Coral™ Pixie®



## YELLOW™ PIXIE®

Bozyellpix®

The unusual lemonade-like yellow hue of this rose makes it a perfect stand-out. Numerous silky petals and bright flowers borne in rich clusters are great for combining with taller dark-leaved perennials. The abundance of small flowers will provide you with a strong sweet scent repeatedly throughout the season. You can't go wrong with Yellow™ Pixie® because its compact bush will do great in borders, groundcovers and pots.

# WINTERJEWEL® COLLECTION

Created with the help of the latest techniques in plant breeding, all roses from the Winterjewel® collection share an important common feature – hardiness to low winter temperatures. Our tests have shown that these varieties can withstand temperatures as low as -35°C in spite of their gentle appearance.

In addition to this important quality, they come in various colours, have repeat blooming and have proven to be very healthy and reliable.

Based on their flower characteristics, we have divided our Winterjewel® collection into two sub-collections: Double and Semi-double.

Double flowers are found in pink, purple-crimson and light pink colour. Their full, captivating appearance makes them perfect for old-style and front gardens.

Charming semi-double flowers bloom profusely throughout the summer and fall, and in colours such as intensive red, peach yellow and pure white they fit into every garden, regardless of its style and size.





## MILLY™ WINTERJEWEL®

Bozmillwin®

'Simply beautiful' are the first words that will come to your mind when looking at this pure white rose. Incredibly rich when flowering, its beauty lies in the simplicity of its flowers with large silky petals. This rose keeps its beautiful dark leaves and flowers until the late autumn. To make the best out of this magnificent rose, use it in large groups in parks and borders or as decoration in bigger pots.



# SUNRISE™ WINTERJEWEL®

Bozsunwin®

Rose that loves the sun so much that it houses it in its flowers. Its colour fades to a soft peach-yellow as you move away from its centre making it resemble a sunrise.

The sunlit flowers are well matched with healthy, glossy and attractive foliage. It readily forms a medium-sized blooming shrub making it ideal for mixed borders and rose beds. It gives a pleasant, warm impression to any landscape.



WINTERJEWEL® COLLECTION  
Sunrise™ Winterjewel®



## CRIMSON™ WINTERJEWEL®

Bozcrimwin®



WINTERJEWEL® COLLECTION  
Crimson™ Winterjewel®

This intensive purple-crimson rose will be the pride of your garden, particularly in the dusk when its unique colour stands out even in a crowd. The shape of a rosette, with a large number of petals, forms a full rich flower which never goes unnoticed. This is a very healthy, winter-hardy rose and its flowers will charm you all year long. With an excellent shrub growth, it can take its place in the middle of the border combined with medium-sized perennials, as well as a solitary plant in a large pot.

# BLUSH™ WINTERJEWEL®

Bozbluswin®

Enrich your garden with this beautiful warm light pink rose and you will be rewarded with more than just a pretty packaging. It comes together with an enchanting and mysterious scent which will make this rose the one that you stop by each time you visit your garden. It has clusters of rich flowers opening to an informal rosette shape that stands on a strong medium-sized bush. Do not be deceived by its gentle appearance, though, since it is extremely resilient and will survive even the coldest winter temperatures.



WINTERJEWEL® COLLECTION  
Blush™ Winterjewel®



WINTERJEWEL® COLLECTION  
Scarlet™ Winterjewel®

## SCARLET™ WINTERJEWEL®

Bozscarwin®

Is there a better way of presenting our semi-double Winterjewel® collection than with this exceptional red rose? It is a very attractive variety with fully open, large, flat flowers that are produced with reliable continuity. Flowers are intensive red in colour with golden stamens in the middle. Well shaped, vigorous bush of medium height with luxurious, shiny and leathery dark foliage makes a great impression in mixed borders, rose beds or edges.



## MELLA® COLLECTION

Carefully selected roses for creating extraordinary borders can be found in our exclusive Mella® collection. These roses enjoy company and will look best when planted in groups. They are compact, have continuous flowering from bottom to top and have an ideal rounded shape. Named after the Latin word for 'honey', our Mella® collection is irresistible to bees and butterflies that enjoy foraging on its natural-looking flowers of attractive colours. They are perfect for biodiversity, wildflower, cottage or roof gardens. You can use them in borders, small hedges or as potted plants in larger containers.

Whatever your choice of use for these lovable plants may be, you are bound to enjoy their colourful flowers throughout the whole season.

# EXOTIC™ MELLA®

Bozexotsun®

As its name suggests, this is a truly exotic variety in our Mella® collection. Flowers are simple yet large and have an exquisite blend of pink and purple colour with yellow aureole around its centre. It is a compact shrub, nice and rounded, perfect for pots or the middle of the flower bed. It sets nice small hips in autumn, perfect for providing food for birds during cold winter months.



MELLA® COLLECTION  
Exotic™ Mella®



MELLA® COLLECTION  
Mellite™ Mella®

## MELLITE™ MELLA®

Bozangfre®

Cheerful and sunny, subtle pink stripes give a dose of elegance to this light-yellow rose. An open centre and attractive colour make it a favourite among bees and butterflies. It is a compact shrub of medium size, very healthy and reliable, suitable for planting in large pots. It is best when planted in groups since that is when this gentle rose truly stands out.

# CRYSTAL™ MELLA®

Bozcrsmel®

White colour of this rose is of the purest hue, simple and beautiful. Flowering period is during the entire season, giving rich clusters of open flowers. It is quite popular among pollinators. Branches are strong and upright and the whole plant is resilient and healthy. To make the best of this variety, plant it in groups, best in the middle of the flower border or in larger pots on your balcony.



MELLA® COLLECTION  
Crystal™ Mella®





MELLA® COLLECTION  
Ruby™ Mella®

## RUBY™ MELLA®

Bozrubybor®

Thin white stripes that cross its petals give an elegant look to this bright, cheerful red rose. The leaves are smooth, leathery and medium green coloured. It forms a beautiful, highly reliable, small-sized shrub. It is ideal for relatively small spaces in the garden, as well as pots on the balcony. It gives a cheerful note to any area of the garden.

# BARBIE™ MELLA®

Bozbarbbor®

One of our favourite roses that you will definitely enjoy. Effective, chic, eye-catching, it has all it takes to be the star of your garden. With its pink flowers and outstanding bush, it will give a whole new perspective to your landscape. It is perfectly suited for borders and will give the best flower display when planted in full sun.



MELLA® COLLECTION  
Barbie™ Mella®



MELLA® COLLECTION  
Amulet™ Mella®

## AMULET™ MELLA®

Bozumulmel®

Pretty, intensive red colours of exquisite natural-looking type of flowers present a perfect choice for gardeners that prefer bright coloured, healthy shrubs for wildflower gardens. Healthy bushes with profusion of intensive red petals are in contrast with yellow stamens in the middle. Amulet™ has dense, compact, closely branched habitus and it flowers continuously during the season. We highly recommend it for all garden situations.

# pheno geno | ROSES

Collection 2025

Pheno Geno Roses b.v. Witveldweg 33, 5971 NS Grubbenvorst, The Netherlands  
Daughter company: Pheno Geno Roses d.o.o. Maršala Tita 75, 23326 Ostojićevo, Serbia  
Visiting Address: Witveldweg 33, 5971 NS Grubbenvorst, The Netherlands;

[info@phenogenoroses.com](mailto:info@phenogenoroses.com)  
[info@phenogenorosesshop.com](mailto:info@phenogenorosesshop.com)  
[www.phenogenoroses.com](http://www.phenogenoroses.com)  
[www.phenogenorosesshop.co](http://www.phenogenorosesshop.co)